

SOHO

LIVING



8-8-5m



THE SOHO LIVING DIFFERENCE

SOHO Living is a contemporary residential home builder and property developer focused on building architecturally designed homes and townhomes that you will be proud to call your own. Our mission is to create communities and dynamic spaces where individuals can grow and thrive.

Thinking outside the box is what we do best, which is why our developments always result in stylish and versatile homes in neighbourhoods that are built to last. Regardless of your stage in life, there's a SOHO Living development that's right for you.

When you choose SOHO Living, you are assured a high standard of service that is unparalleled in the industry. We pride ourselves on the exceptional quality of our designs, builds and finishes that are guaranteed to exceed homebuyer expectations every time.

By investing in a SOHO Living home, you are investing in your best possible future. With a wide selection of townhomes and homes available, we can make your home ownership dreams a reality. Find out for yourself why SOHO Living are one of Australia's fastest growing builders and experience firsthand the SOHO Living difference.

CONTENTS

- 6 - 7 8-8.5M FACADE RANGE
- 8 - 17 8-8.5M FLOOR PLAN RANGE
- 18 - 23 SOHO LIVING TURNKEY INCLUSIONS
& COLOUR SCHEMES





8-8.5M
WIDE RANGE

Choose your facade



BERKLEY



EMERSON



GEMINI



HAMPTON



HAYWORTH



LINCOLN



APOLLO



BELMONT



PARKSIDE



PORTSEA

NEW HOME COLLECTION | 8-8.5M WIDE RANGE



CAPE SIDE

3 BEDS 2 BATHS 1 CAR



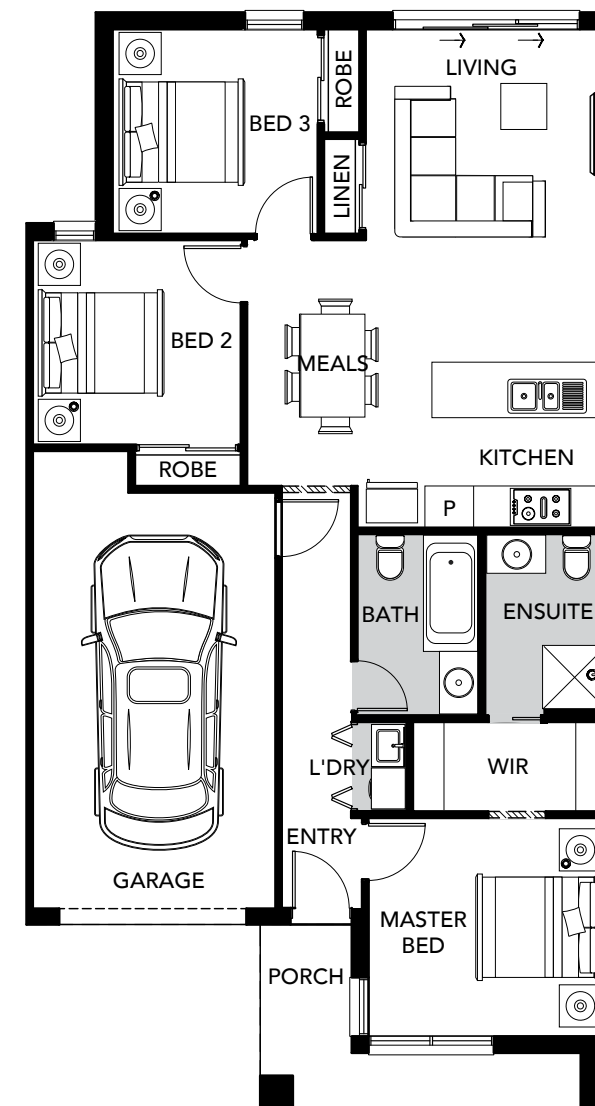
BLOCK SIZE

8.5M x 21M



HOUSE SIZE

13 SQ



CHELSEA

3 2 1



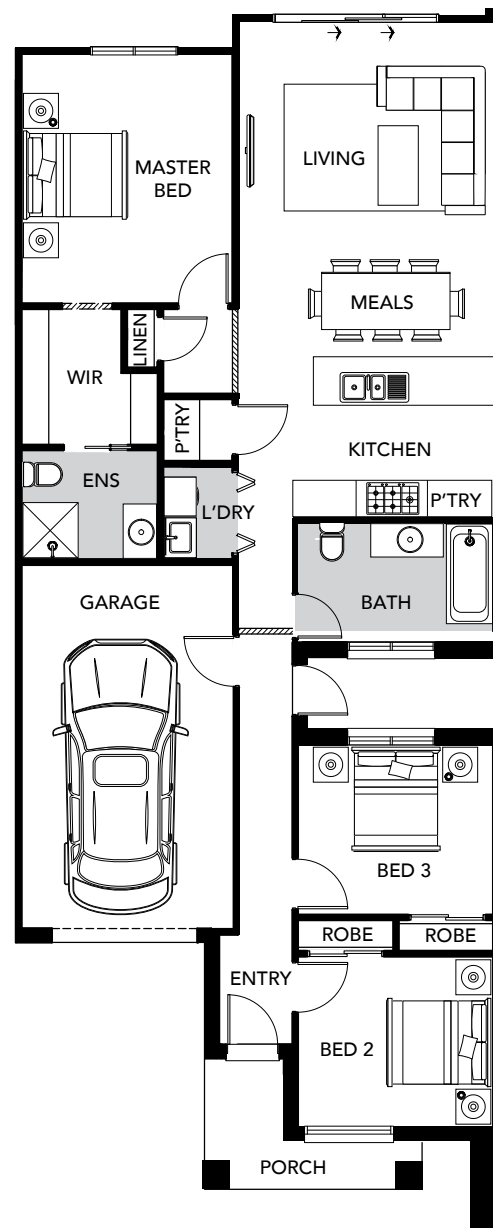
BLOCK SIZE

8M x 24M



HOUSE SIZE

14 SQ



HOUSTON

3 2 1



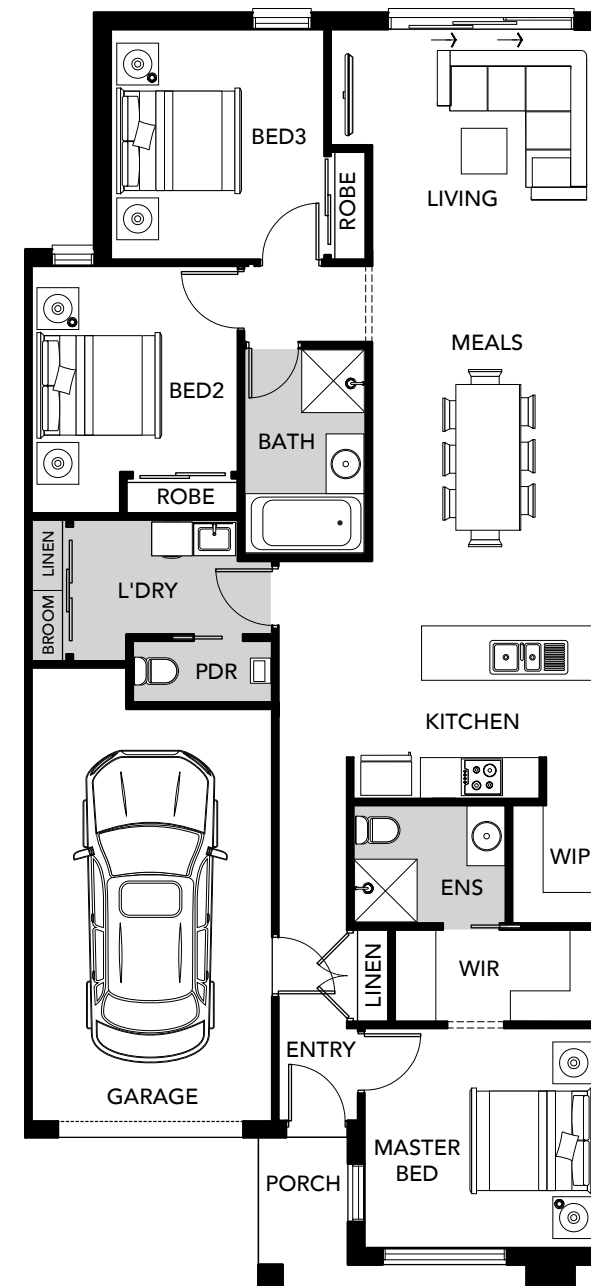
BLOCK SIZE

8.5M x 28M



HOUSE SIZE

16 SQ





HOUSTON II

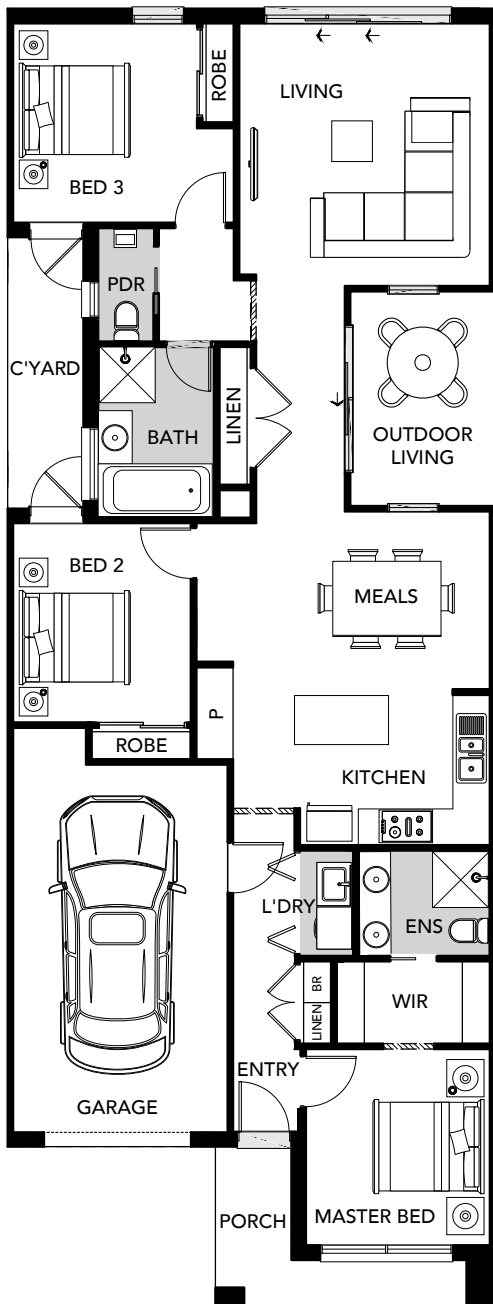
3 2 1



BLOCK SIZE
8M x 28M



HOUSE SIZE
16 SQ



HILTON

3 2 1



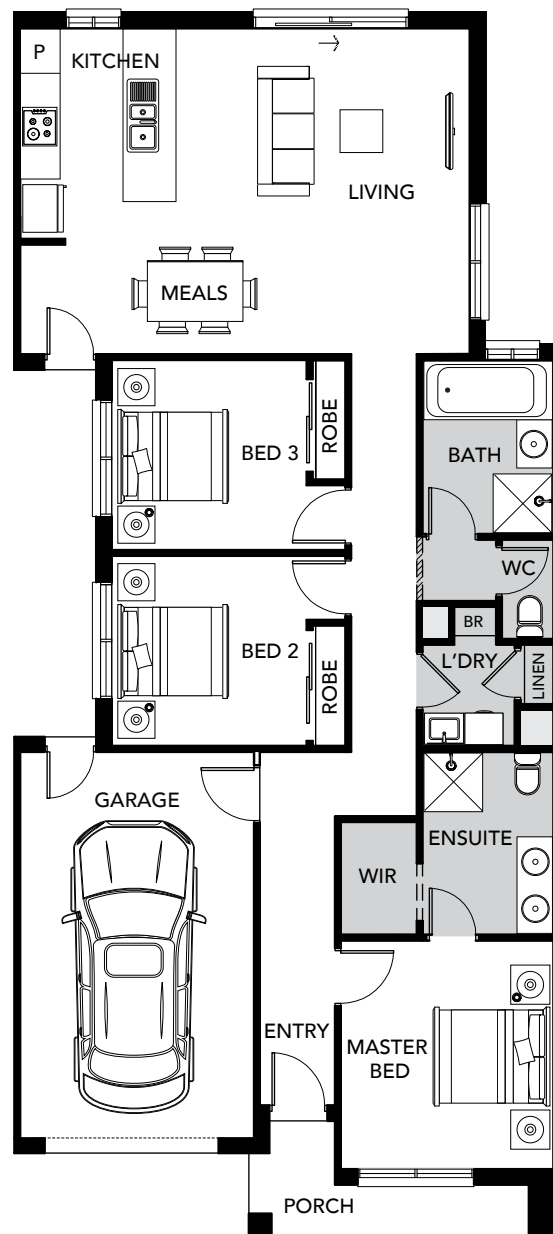
BLOCK SIZE

8.5M x 28M



HOUSE SIZE

16 SQ



METROPOL

3 2 1



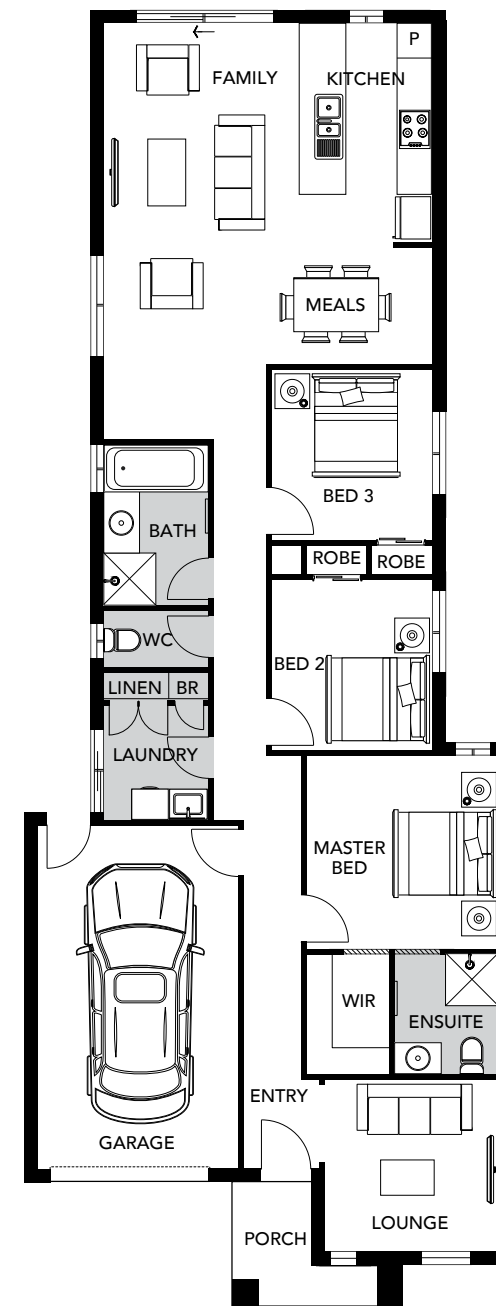
BLOCK SIZE

8.5M x 30M



HOUSE SIZE

17 SQ



METROPOL II

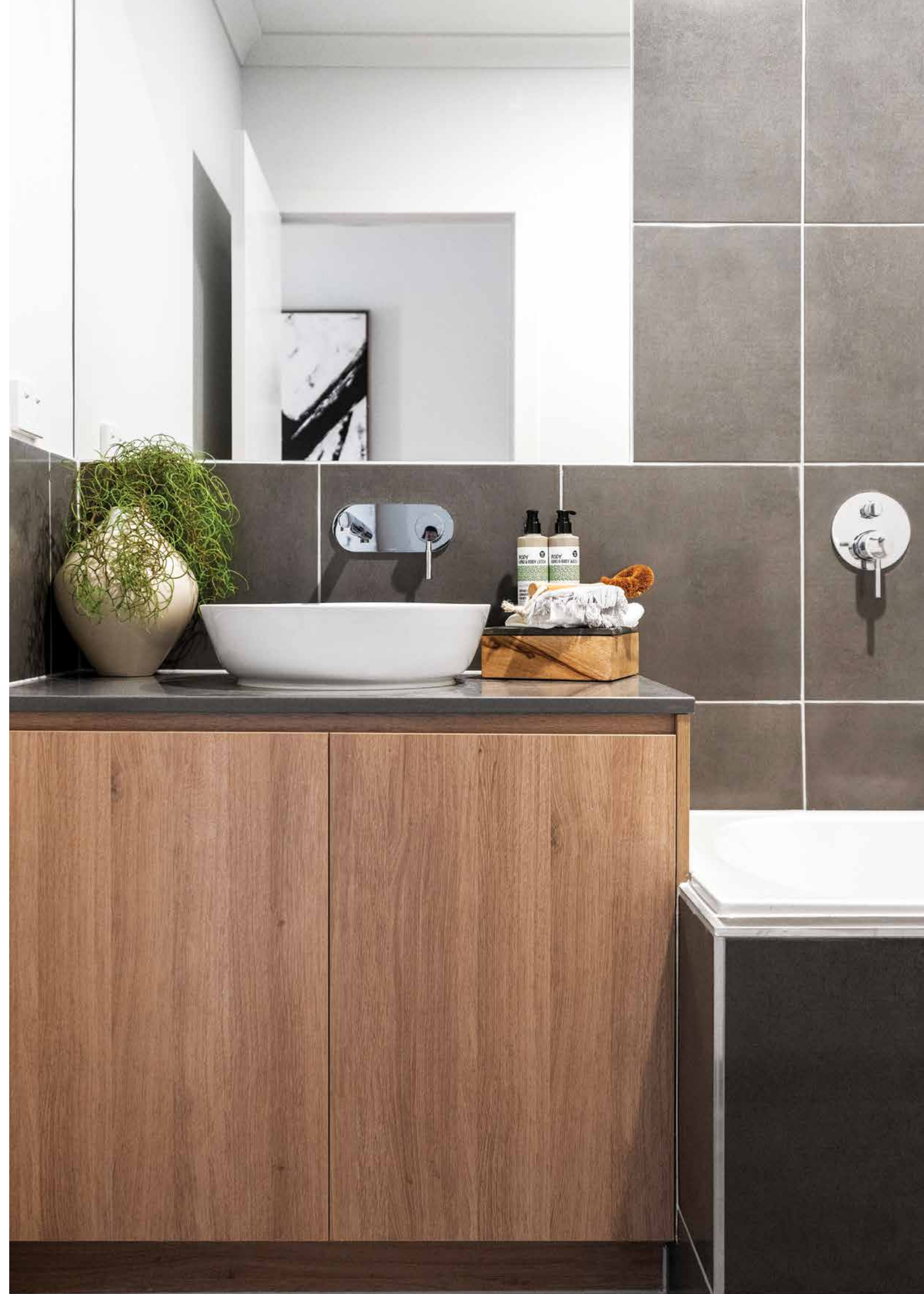
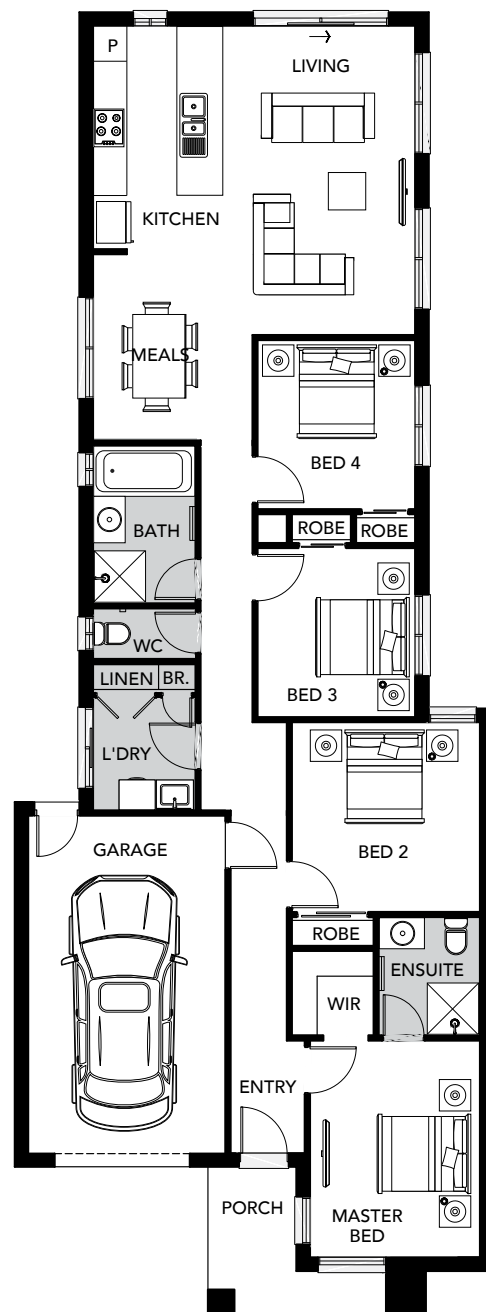
4 2 1



BLOCK SIZE
8.5M x 30M



HOUSE SIZE
17 SQ





**YOUR
TURNKEY
INCLUSIONS**



INTERNAL FEATURES

Ceiling Height: 2590mm ceiling height (nominal) to single storey with 75mm cove cornice. 2590mm ceiling height (nominal) to ground floor of double storey homes, 2440mm ceiling height (nominal) to first floor, 75mm cove cornice throughout.

Room Doors: Flush panel Honeycomb Core 2040mm high to single storey, 2040mm high to ground floor and first floor of double storey.

Room Door Furniture: Passage set. Provide Alba Chrome levers through Chrome finish.

Mouldings: Skirtings – 67x18mm square edge primed MDF.

Architraves – 67x18mm square edge primed MDF

Plaster: Ceiling Plaster. 10mm plasterboard finish.

Wall Plaster: Plasterboard 10mm thick. Water resistant plasterboard to Ensuite, Bathroom and above Laundry trough.

Blinds: Holland blinds to bedrooms and living areas.

Fly Wire: Fly wire screens to all openable windows

PAINT

Internal and External: Two coats.

Woodwork and Skirting: Two coats.

HEATING & COOLING

Gas ducted heating unit installed in roof space with digital thermostat and ducted to living areas and bedrooms (excludes wet areas) as per manufacturers/ suppliers recommendations for home size.

Reverse cycle split system (heating and cooling) to living.

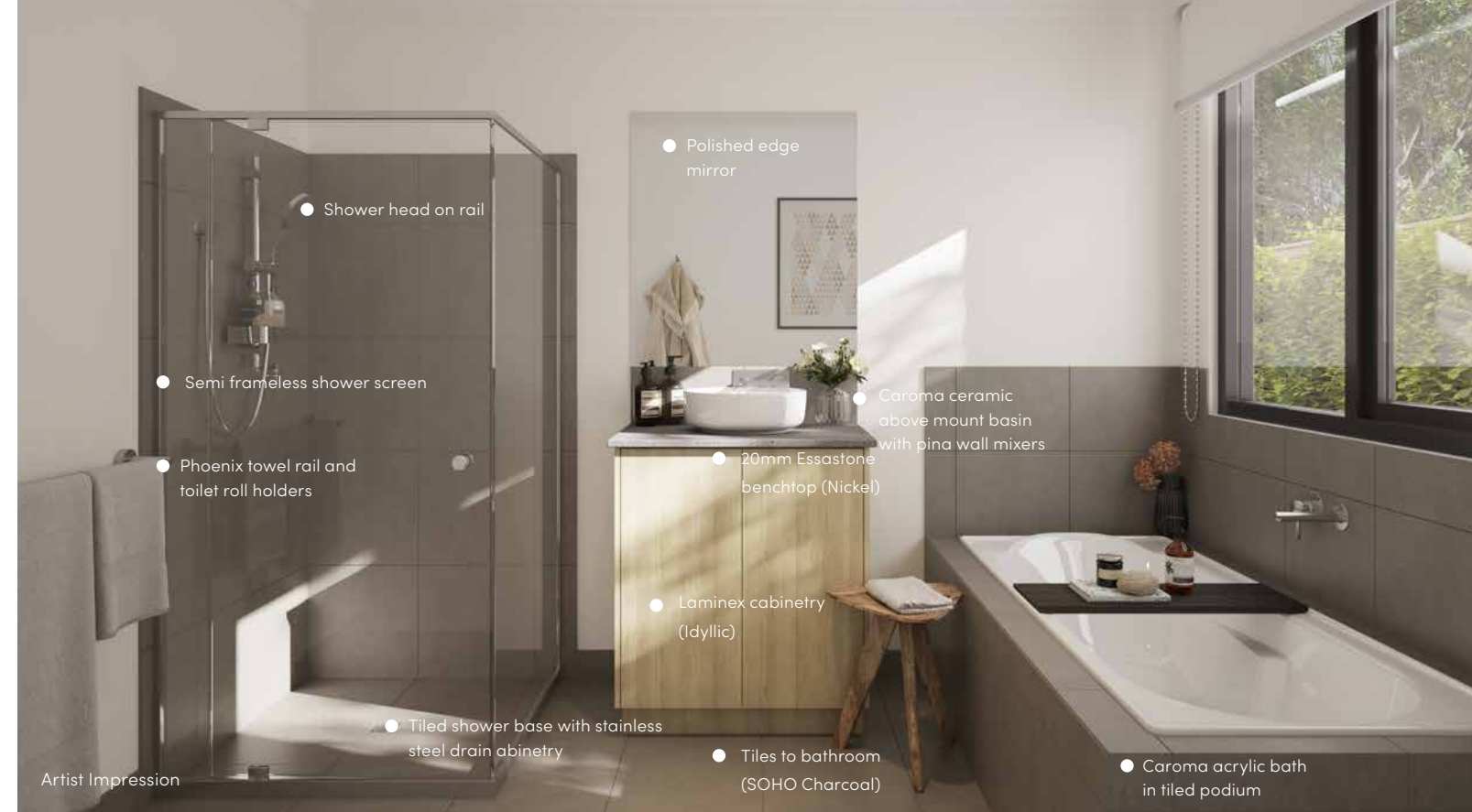
HOT WATER SYSTEM

Hot water unit in accordance with estate design guidelines.

KITCHEN

SMEG oven 600mm.

SMEG cooktop 900mm 5 burner stainless steel gas cooktop.



Artist Impression

- Polished edge mirror
- Shower head on rail
- Semi frameless shower screen
- Phoenix towel rail and toilet roll holders
- Caroma ceramic above mount basin with pina wall mixers
- 20mm Essastone benchtop (Nickel)
- Laminex cabinetry (Idyllic)
- Tiled shower base with stainless steel drain abinetry
- Tiles to bathroom (SOHO Charcoal)
- Caroma acrylic bath in tiled podium

SMEG rangehood 900mm stainless steel canopy rangehood.

SMEG dishwasher 600mm.

Sink: Stainless steel double bowl sink.

Tap: Mixer gooseneck in chrome finish.

Bench Top: Engineered stone benchtop 20mm. Choose colour from SOHO Living colour scheme

Splashback: Premium Mirror. Choose colour from SOHO Living colour scheme.

BATHROOM, ENSUITE, POWDER ROOM & WC

Mirror: Polished edges to full width of vanities sitting on 200mm tile splashback.

Basin: Ceramic Caroma, round. No tap hole low profile square inset basin (white), chrome waste 1 tap hole/ overflow.

Vanity Unit: Floating vanity unit on tiled pedestal.

Bench Top: Engineered stone benchtop 20mm. Choose colour from SOHO Living colour scheme.

Bath: Caroma acrylic bath (white) in tiled podium. (Design Specific)

Shower Bases: Ceramic tiled shower base. Selection from SOHO Living colour scheme range with Demtech grated drain system.

Shower Screens: 1950mm high semi frameless with pivot door and clear laminated glass.

Taps and Outlets: Ensuite Shower hand shower on rail. Bathroom Shower – Shower hand shower on rail. Bath (Wall Mounted) – Straight wall bath outlet and wall mixer. Basin (Wall Mounted) – Wall mixer.

Accessories: Toilet roll holders chrome and double towel rails.

Toilet Suite: Caroma toilet suite in white with soft close seat.

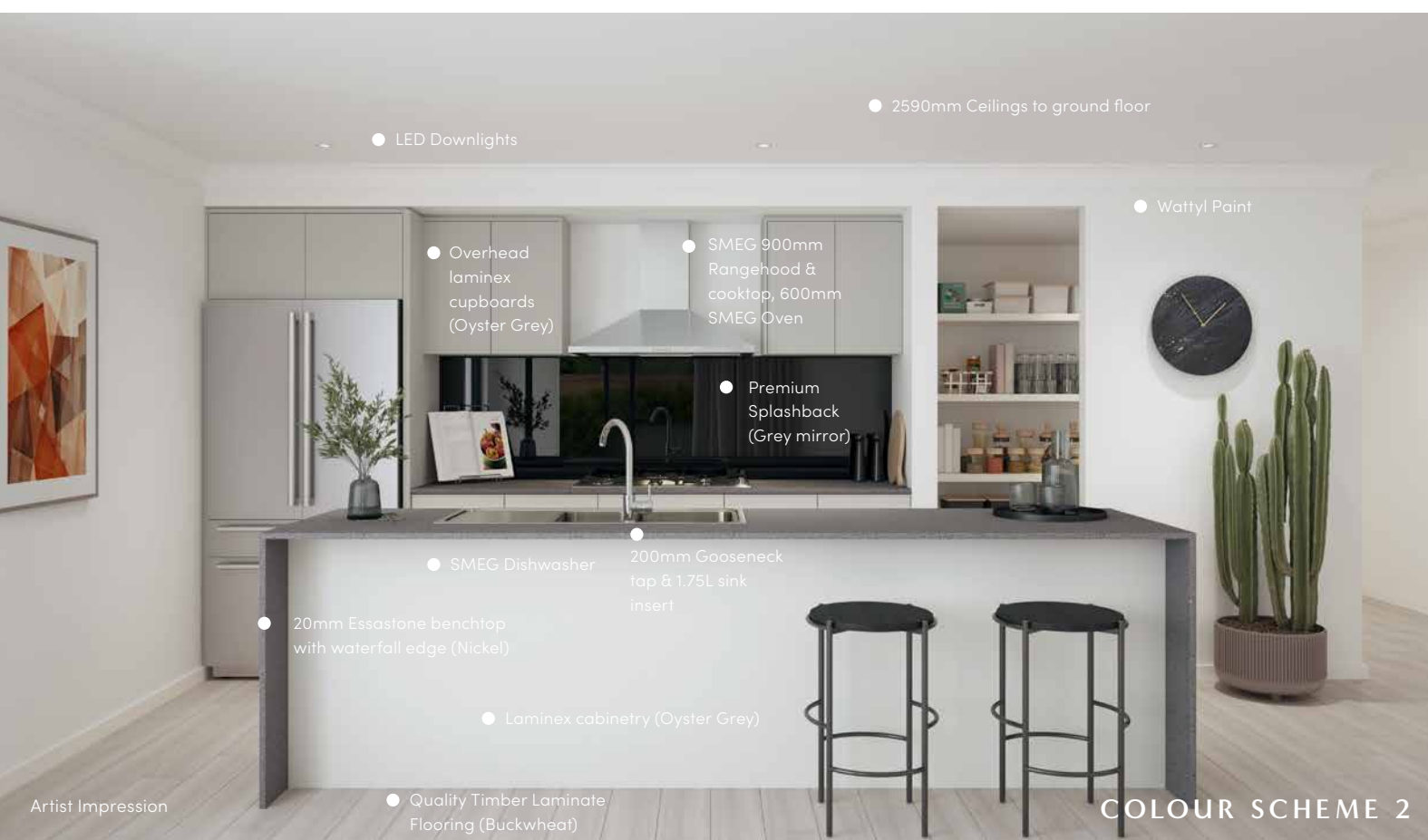
LAUNDRY

Trough: Caroma 45 litre single inset bowl stainless steel without top bypass.

Base Cupboard: 800mm wide fully lined modular cabinet, refer to working drawings.

Bench Top: Laminate with square edge.

Tapware: Sink mixer in chrome finish.



Artist Impression

- LED Downlights
- 2590mm Ceilings to ground floor
- Watty Paint
- Overhead laminex cupboards (Oyster Grey)
- SMEG 900mm Rangehood & cooktop, 600mm SMEG Oven
- Premium Splashback (Grey mirror)
- SMEG Dishwasher
- 200mm Gooseneck tap & 1.75L sink insert
- 20mm Essastone benchtop with waterfall edge (Nickel)
- Laminex cabinetry (Oyster Grey)
- Quality Timber Laminate Flooring (Buckwheat)

COLOUR SCHEME 2

ELECTRICAL

Internal Light Points: Recessed LED downlight in white non-metallic polyamide housing with diffuser.

External Light Points: (2 No) flood light wall mounted light fitting.

Power Points: White surround, double power points throughout excluding dishwasher, microwave and refrigerator provision.

Smoke Detector: Hardwired with battery backup

Exhaust Fans: Above all showers and toilet not opening to outside air, 250mm with self-sealing air flow draft stoppers.

TV Points: To Family and Master Bedroom.

Telephone Point: To Kitchen and Master Bedroom.

Safety Switch: Residual Current Devices safety switch and circuit breakers to meter box.

Alarm: Reliance 8 with 3 sensors keypad at entrance.

PLUMBING

(2 No) garden taps, one located to the front water meter and one adjacent to the external Laundry door.

TILING

Ceramic Floor Tiles: Selected from SOHO Living colour scheme 400x400mm to Laundry, Ensuite, Bathroom, WC, and Powder room.

Ceramic Wall Tiles: Selected from SOHO Living colour scheme 400x400mm to Laundry, Ensuite, Bathroom, WC, Powder room, shower recesses and above bath.

FLOOR COVERINGS

Carpet: Selected from SOHO Living colour scheme to Bedrooms, WIR, Lounge, Study, Activity and Staircase

Timber Laminate: Selected from SOHO Living colour scheme timber look laminate flooring to Entry, Kitchen, WIP, Meals, Family and rear hallway.

STORAGE

Shelving: Robes – One white melamine shelf and hanging rail.

Walk in Robe – One white melamine shelf and hanging rail.

Pantry/Linen – Four white melamine shelves.

Broom – One white melamine shelf.

Robe Doors: Single Storey – 2040mm high flush panel hinged doors.

Double Storey – 2040mm high flush panel hinged doors.

GARAGE

Garage Door: Colorbond sectional door in flat line profile

Remote Control: Remote control unit to front garage door with 2 handsets.

Pedestrian Door (Home Specific): Door Frame – Aluminium frame and sill with sealer undercoat and low sheen acrylic top coats paint finish.

Door – 2040mm high weatherproof flush panel with sealer undercoat and low sheen acrylic top coats paint finish, opening in.

Door Furniture – Schlage Alba Chrome Levers through Chrome finish.

Internal Access Door (Home Specific): Door Frame – Timber with sealer undercoat and low sheen acrylic top coats paint finish including full perimeter draft seals.

Door – 2040mm high flush panel with sealer undercoat and low sheen acrylic top coats paint finish, opening into home.

Door Furniture – Chrome Levers through Chrome finish.

OUTDOOR

Landscaping: Garden and plants to the front and rear. Instant turf to rear yard. Or as per landscape design on drawings.

Fencing: 1800mm high timber paling/Colorbond including wing fence and gate to suit estate design covenants.

Paving: Coloured concrete to driveway, front path and rear outdoor living.

Letterbox: Pre cast concrete letterbox with colour to match house.



SOHO


LIVING



Your dream. Your home.



13 76 46 | sales@soholiving.com.au | soholiving.com.au

 [soho_living](#)

 [soholivingau](#)

 [SOHO Living](#)

All images are protected by copyright and are owned by SOHO Living Australia Pty Ltd. The building practitioner is by SOHO Living Australia Pty Ltd trading as SOHO Living, registration number CDB-U50036. Images and photographs contained within this brochure should be used as a guide and depicts an artist impression for illustrative purposes only. They may depict fixtures finishes features furnishings and landscaping not supplied by SOHO Living, please ask your new homes consultant for detailed home designs specific drawings for full extent of inclusions, features, pricing and specifications of your preferred SOHO Living home design colour scheme and or facade. All information contained within this brochure is accurate at time of 20/04/2022