

TOWNHOME

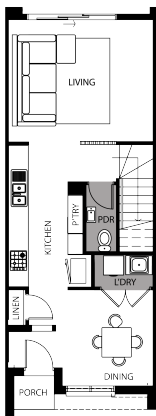
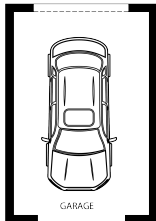


REGENT | LOT 9 | ROSELLE

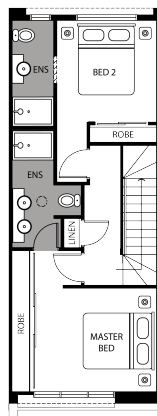
9 SPRINGVALE ROAD, SPRINGVALE SOUTH

FIXED PRICE

\$714,950*



GROUND FLOOR



FIRST FLOOR



Land Size 137m²

Home Size 14SQ

- Architectural façade
- 2590mm Ceiling heights to ground floor
- 20mm Stone benchtops including waterfalls (*Design specific*)
- 20mm stone benchtop to ensuite and bathroom
- Fisher & Paykel Kitchen appliances including dishwasher
- Mirrored splashback to kitchen
- Coloured concrete driveway and front path
- Flooring timber laminate and carpet
- Tiled shower bases
- Colorbond sectional garage door with dual remotes
- Landscaping to front and rear including letterbox, clothesline and fencing

