

TOWNHOME



Artist Impression.

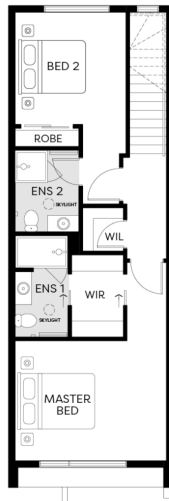
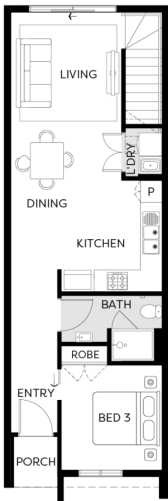
**BENTLEY E | VOGUE | LITTLE
SPRINGS**
LOT 1032 LOT 1032, CREEKVALE PLACE

FIXED PRICE

\$529,950*



GARAGE



Land Size 133m²

Home Size 16SQ

- Architectural façade
- 2590mm Ceiling heights to ground floor
- 40mm Stone benchtops including waterfalls (*Design specific*)
- 40mm stone benchtop to ensuite and bathroom
- Fisher & Paykel Kitchen appliances including dishwasher
- Premium splashback to kitchen
- Coloured concrete driveway and front path
- Flooring timber laminate and carpet
- Tiled shower bases
- Colorbond sectional garage door with duel remotes
- Ensuite, bathroom and toilet accessories
- Sliding robe doors
- Landscaping to front and rear including letterbox, clothesline and fencing

