

# TOWNHOME



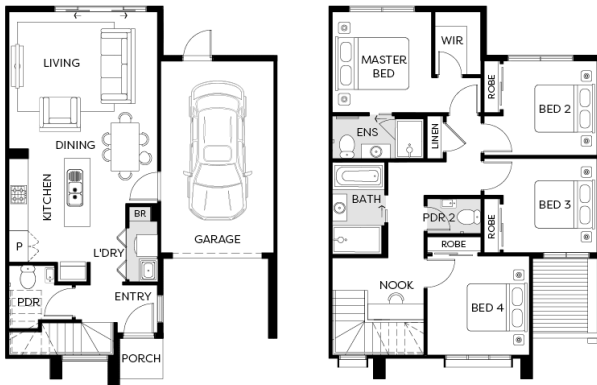
Artist Impression

## KINGSTON SG | 4 BED

LOT 115 115 VERDENIA DRIVE,  
GREENVALE

FIXED PRICE

# \$678,950\*



**Land Size** 187m<sup>2</sup>

**Home Size** 17SQ

- Architectural façade
- 2590mm Ceiling heights to ground floor
- 20mm Stone benchtops including waterfalls (*Design specific*)
- 20mm stone benchtop to ensuite and bathroom
- Fisher & Paykel Kitchen appliances including dishwasher
- Mirrored splashback to kitchen
- Coloured concrete driveway and front path
- Flooring timber laminate and carpet
- Tiled shower bases
- Colorbond sectional garage door with duel remotes
- Landscaping to front and rear including letterbox, clothesline and fencing

