



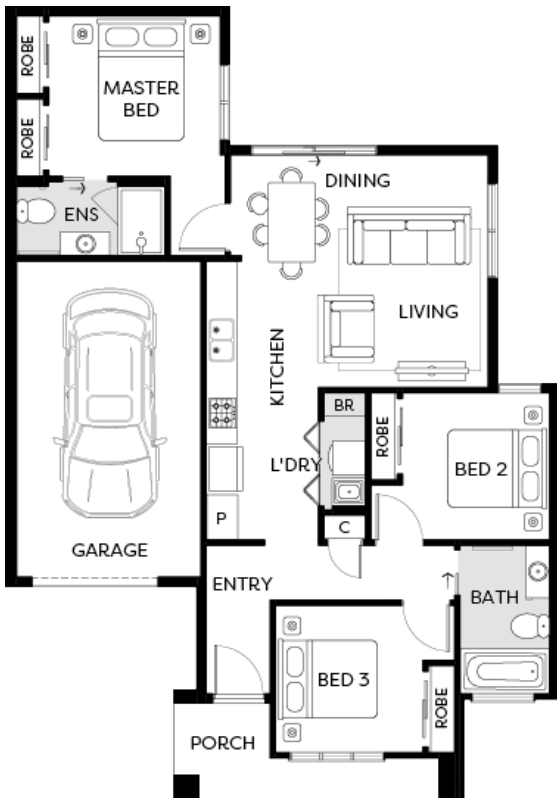
Artist Impression.

BRAE CUSTOM E

LOT 112 112 VERDENIA DRIVE,
GREENVALE

FIXED PRICE

\$618,950*



Land Size	212m ²
Home Size	12SQ

- Architectural façade
- 2590mm Ceiling heights to ground floor
- 20mm Stone benchtops including waterfalls (*Design specific*)
- 20mm stone benchtop to ensuite and bathroom
- Fisher & Paykel Kitchen appliances including dishwasher
- Mirrored splashback to kitchen
- Coloured concrete driveway and front path
- Flooring timber laminate and carpet
- Tiled shower bases
- Colorbond sectional garage door with duel remotes
- Landscaping to front and rear including letterbox, clothesline and fencing

